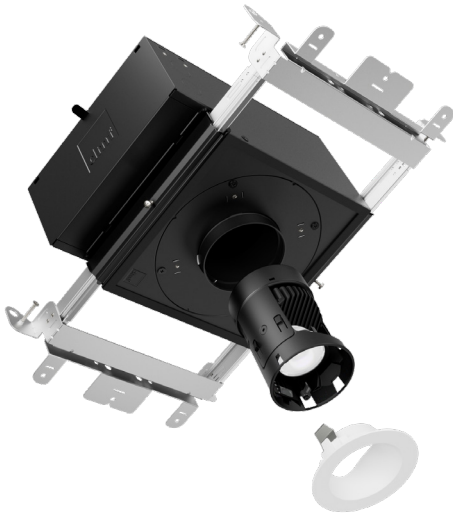


Project:	Type:
Product Code:	Date:

V022724



2" Round Adjustable

SMALL APERTURE Delivers the ultimate in quiet ceiling designs

PRECISION LOCK COLLAR Eliminates over-cutting and ensures perfect cutout

ARCHITECTURE-GRADE Deep die-cast aluminum knife edge trim provide unmatched precision and exceptionally easy installation

DIMMING COMPATIBILITY GUARANTEED In-house designed integrated driver ensures seamless compatibility with every major lighting control system

INSTALLATION

Ceiling Thickness

New Construction: 1/2" up to 1 1/4"

Remodel: 5/8" up to 1 1/4"

Ceiling Material

Drywall, Millwork

TRIMS

Style

Standard, Micro Flange, Flangeless

Finish

White, Black, Bronze, Clear Diffuse, Warm Diffuse, Custom (RAL colors)

LIGHT OUTPUT & DISTRIBUTION

Module

Adjustable

Adjustment

360° directional aim, 35° tilt

Lumens (Power)

750 lm (12.5W), 1000 lm (14.3W)

Color Quality

True Spectrum™

Color Temperature

- 2700K
- 3000K
- 3500K
- 4000K
- Warm Dim (3000K–1800K)
- Tunable White (4000K–1800K)
- Tunable White (6500K–2700K)

Beam Spread

- Narrow Spot (15°)
- Spot (25°)
- Flood (40°)
- Linear Spread

POWER & CONTROLS

Input Voltage

120 / 277V

Dimming

TRIAC/ELV (1%, 120V only), DALI-2 (0.1%)

RATINGS & CERTIFICATIONS

- IC (Insulation Contact) Rated*
- ASTM E283 Certified Air Tight
- Chicago Plenum
- UL Listed for Damp Location
- RoHS Compliant
- DarkSky Approved**

* New Construction only; IC for Roll, Batt, Loose Fill and Spray Foam see Housing section for details
**Downlight only, CCT less than or equal to 3000K, non-decorative trims only

WARRANTY

10 year limited warranty; 50,000 hours



PRODUCT BUILDER

HOUSING

PRODUCT CODE		INSTALLATION		SHAPE	
<input type="text"/>		<input type="text"/>		<input type="text"/>	
X2	2" Housing	NC	New Construction	R	Round
		CP	Chicago Plenum		
		RM	Remodel		

MODULE

PRODUCT CODE		LUMENS		COLORMETRIC		CCT		BEAM SPREAD		DIMMING	
<input type="text"/>		<input type="text"/>		<input type="text"/>		<input type="text"/>		<input type="text"/>		<input type="text"/>	
ART2A	Adjustable	07	750 lm	T	True Spectrum™	27	2700K	NS	Narrow Spot (15°) ³	T	TRIAC/ELV
		10	1000 lm			30	3000K	SP	Spot (25°)	D	DALI-2 ⁴
						35	3500K	FL	Flood (40°)		
						40	4000K	LS	Linear Spread		
						3W	Warm Dim (3000K - 1800K) ¹				
						T1	Tunable White (4000K - 1800K) ²				
						T2	Tunable White (6500K - 2700K) ²				

¹ Only available in 1000 lm; Not available in Narrow Spot beam spread

⁴ Only available in 750 lm with Tunable White CCT, 1000 lm Warm Dim or 1000 lm with static CCT

² Only available in 750 lm, DALI-2 dimming

³ Only available in 750 lm

TRIM

PRODUCT CODE		FINISH		OPTION	
<input type="text"/>		<input type="text"/>		<input type="text"/>	
X2TRAS	2" Standard Trim	WH	White	[Blank]	None
		BK	Black	MF	Micro Flange ⁵
		BZ	Bronze	FL	Flangeless ^{5,6,7}
		CW	Clear Diffuse, White Flange		
		WW	Warm Diffuse, White Flange		
		CC	Custom (RAL colors)		

⁵ Not available in Clear or Warm Diffuse finish

⁶ Requires Flangeless Mud or Wood Kit in New Construction housings

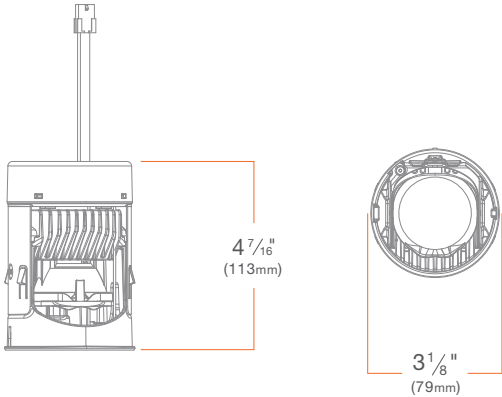
⁷ Not compatible with Remodel Housing

ACCESSORIES & KITS

X2OANS	Narrow Spot (15°) Optic
X2OASP	Spot (25°) Optic
X2O AFL	Flood (40°) Optic
X2OALS	Linear Spread Optic

X2KRMUD	Flangeless Mud Kit <i>(Required for New Construction installation of Flangeless Trim in drywall ceiling)</i>
X2KRWOOD	Flangeless Wood Kit <i>(Required for New Construction installation of Flangeless Trim in wood ceiling)</i>
X2KRTEMPLATE	Router Template <i>(Recommended for routing 3 3/16" [81mm] cutout for Flangeless Trim in wood ceiling)</i>

MODULE



SUMMARY

	STATIC CCT	WARM DIM	TUNABLE WHITE
CCT	2700K, 3000K, 3500K, 4000K	3000K - 1800K	4000K - 1800K; 6500K - 2700K
LUMENS (POWER)	750 lm (12.5W), 1000 lm (14.3W)	1000 lm (12.0W)	750 lm (13.4W)
EFFICACY	60 lm/W, 70 lm/W	83 lm/W	56 lm/W
COLOR QUALITY	True Spectrum™ 98 CRI, 2-step SDCM	True Spectrum™ 93+ CRI, 2-step SDCM	True Spectrum™ 93+ CRI, 3-step SDCM
BEAM SPREAD	Narrow Spot (15°), Spot (25°), Flood (40°), Linear Spread (60° x 10°)	Spot (25°), Flood (40°), Linear Spread (60° x 10°)	Narrow Spot (15°), Spot (25°), Flood (40°), Linear Spread (60° x 10°)
DIMMING	0-10V, TRIAC/ELV, DALI-2	0-10V, TRIAC/ELV, DALI-2	DALI-2
LED CHIP	Cree Pro9	Bridgelux	Bridgelux
LISTINGS	ENERGY STAR® qualified*, California Title 24 2019 JA8 compliant, UL Listed for Damp Location, UL Certified US-CA, Declare, RoHS compliant		
ADJUSTMENT	360° directional aim, 35° tilt		
SLOPE CEILING COMPATIBILITY	Up to 35°		

* Refer to ENERGY STAR Certified light fixtures database

ADDITIONAL

INPUT VOLTAGE: 120/277V, 50/60Hz	TOTAL HARMONIC DISTORTION: Less than 20%
MAX INPUT CURRENT (120V): 0.11 amps	AMBIENT OPERATING TEMPERATURE: -20°C to 40°C
MAX INPUT CURRENT (277V): 0.05 amps	WARRANTY: 10 year limited warranty; 50,000 hours at 70% lumen maintenance
CONNECTOR: 6-pin Molex	
POWER FACTOR: Greater than 0.9	

TRIMS



SUMMARY

CONSTRUCTION: Die-cast aluminum

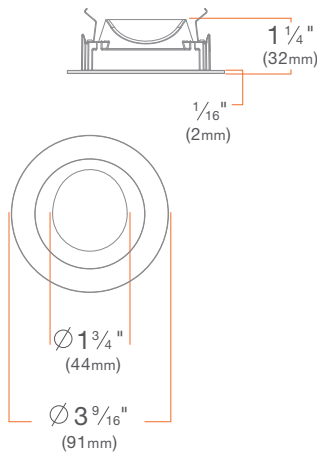
FINISH: Wet paint

INSTALLATION: Precision Lock Collar included with Flanged or Micro Flange Trim and Flangeless Mud or Wood Kit

WARRANTY: 1 year limited warranty

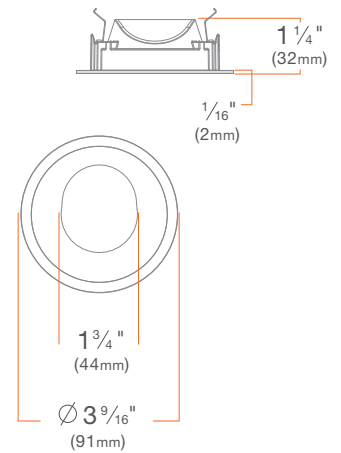
Standard

X2TRASWH



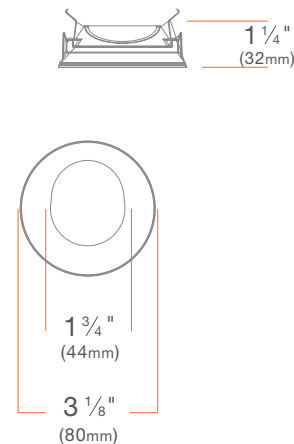
Micro Flange

X2TRASWHMF



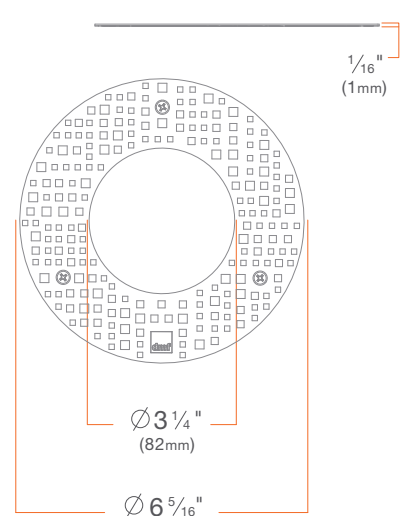
Flangeless

X2TRASWHFL

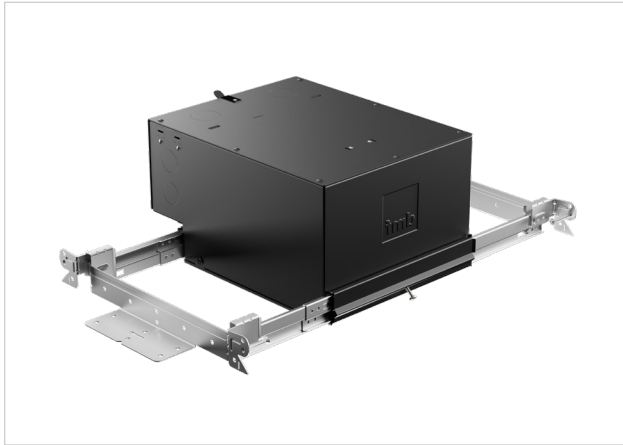


Flangeless Mud Plate

X2KRMUD



HOUSING



New Construction **X2NCR** Chicago Plenum **X2CPR**

SUMMARY

JUNCTION BOX: Equipped with six knockouts: four ½" trade size knockouts, two ¾" trade size knockouts, and four romex knockouts. Approved for 8 (four in, four out) #12 AWG 70°C.

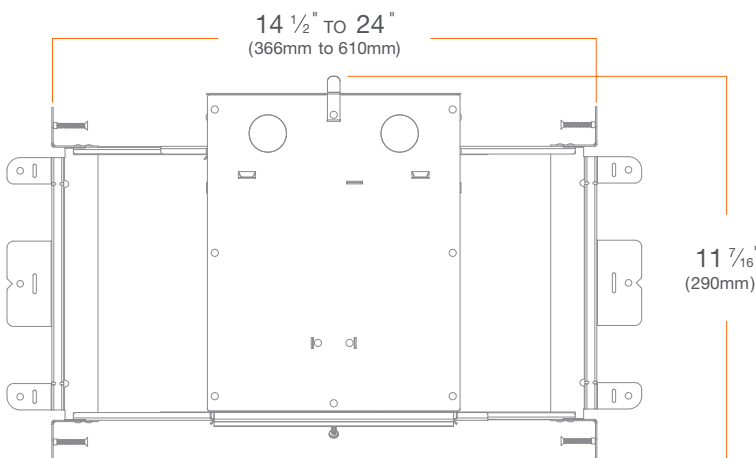
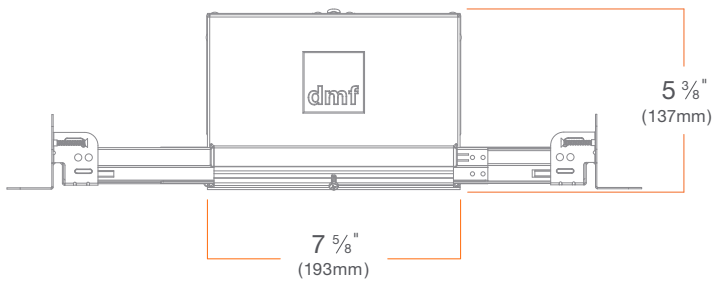
MOUNTING: Pre-installed mounting brackets allow vertical adjustment of bar hangers up to 1 ¼".

CEILING: ½" up to 1 ¼"

CUTOUT: 3 ¼" (82mm) round opening

LISTINGS: Chicago Plenum, ASTM E283 certified Air Tight, IC (Insulation Contact) up to R-32 for Roll, Batt, and Loose Fill, up to R-60 Spray Foam with standard trims, up to R-32 Spray Foam with other trims or hex louver.

WARRANTY: 1 year limited warranty



HOUSING



Remodel

X2RMR

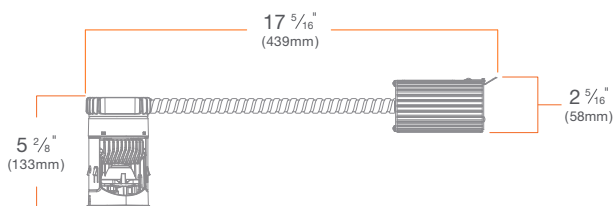
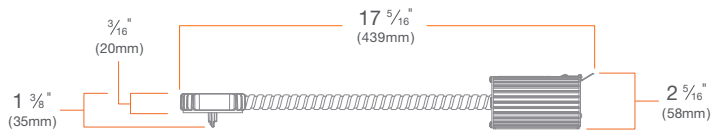
SUMMARY

JUNCTION BOX: Equipped with four knockouts: two 1/2" trade size knockouts and two romex knockouts. Approved for 8 (four in, four out) #12 AWG 70°C.

CEILING: 5/8" up to 1 1/4"

CUTOUT: 3 1/4" (82mm) round opening

WARRANTY: 1 year limited warranty





PHOTOMETRY

Coming Soon